

AGENDA ITEM NO. 7.2

MEETING DATE: August 15, 2023

STAFF REPORT – COVER SHEET

SUBJECT: RFP - Multi Use Game Area (MUGA) DATE: July 31, 2023


DEPARTMENT Operations - Public Works and Parks PREPARED BY: Richard Fortin

1. SUMMARY OF ISSUE:

A Request for Proposal (RFP) was released for the supply and installation of one (1) Multi Use Game Area (MUGA) in Jinkerson Park with an option to purchase a second one in 2024. The City of Chilliwack received submissions from two (2) proponents before the closing date and time. The submissions were evaluated and the ratings summarized below.

2. RECOMMENDATION:

Recommendation that Council award the proposal for "Multi Use Game Area (MUGA)" to Swingtime Distributors Ltd., in the amount of \$ 417,872.40 (plus applicable taxes), and further, that the Mayor and Corporate Officer be authorized to sign any necessary documentation.



Joe Koczka, Director of Operations-Public
Works and Parks

3. FINANCE COMMENTS:


Funding has been assigned from the Provincial Growing Communities Fund Grant.



Glen Savard, Director of Finance

**4. CHIEF ADMINISTRATIVE OFFICER'S
RECOMMENDATION/COMMENTS:**

Supports recommendation



Chris Crosman, CAO

STAFF REPORT ON
RFP - Multi Use Game Area (MUGA)

PREPARED BY: Richard Fortin DATE: August 15, 2023

POSITION: Parks Planning Manager DEPARTMENT: Operations-Public Works and Parks

1. BACKGROUND:

The City of Chilliwack has observed an increase in popularity of the recently installed Multi Use Game Area (MUGA) facilities. In response to the increasing demand, City staff have identified the necessity for the development and installation of a third (3) facility, with an option to develop a fourth (4) facility in 2024. The new facility will be installed in Jinkerson Park and will resemble the existing ones, providing a fully enclosed multi use game area on an asphalt surface. The objective is to enhance recreational opportunities for area residents and visitors alike

The City of Chilliwack released an RFP seeking a turnkey solution for the design and construction of the new facility. The desired design specified is to be aesthetically appealing, harmonizing with the existing facilities while ensuring optimal functionality. The design requirements also specified a well-constructed asphalt pad, accommodating all proposed games and activities. To minimize maintenance requirements and prolong the service life of the facility, all construction activities and materials used are to meet industry standards.

The proposed development of an additional Multi Use Game Area reflects the City of Chilliwack's commitment to promoting active lifestyles and community engagement

2. FACTORS:

A Request for Proposal (RFP) was released for the supply and installation of one (1) Multi Use Game Area (MUGA) in Jinkerson Park with an option to purchase a second one in 2024. Two (2) proposals were received and found to meet the technical and financial requirements.

The evaluation team concluded the following:

<u>Company</u>	<u>Price (plus applicable taxes)</u>	<u>Evaluation Score (%)</u>
Swingtime Distributors Ltd.	\$ 417,872.40	83 40
Habitat Systems Inc	\$ 419,072.00	59 10

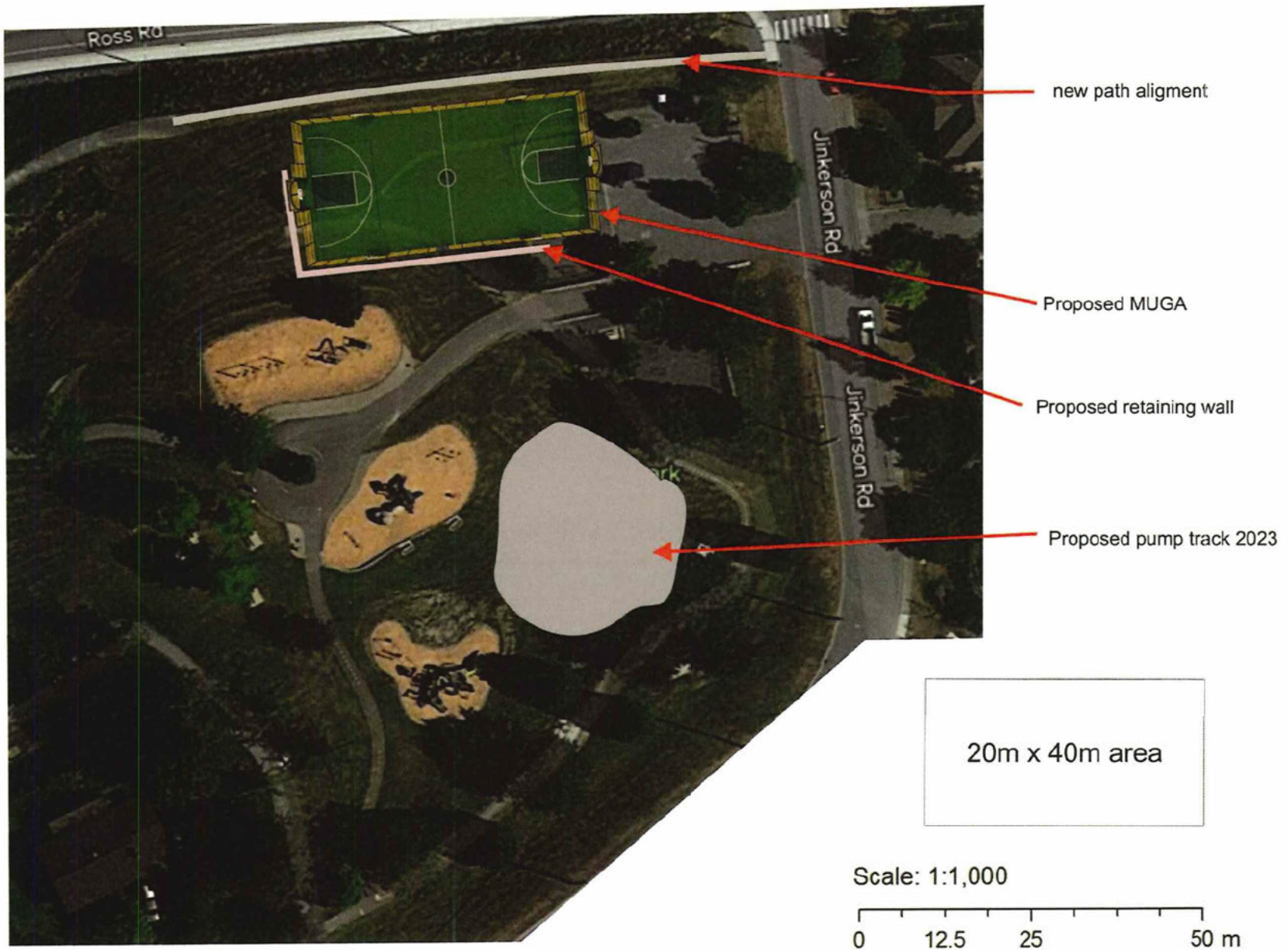
3. RECOMMENDATION & SUBSTANTIATION:

Recommendation.

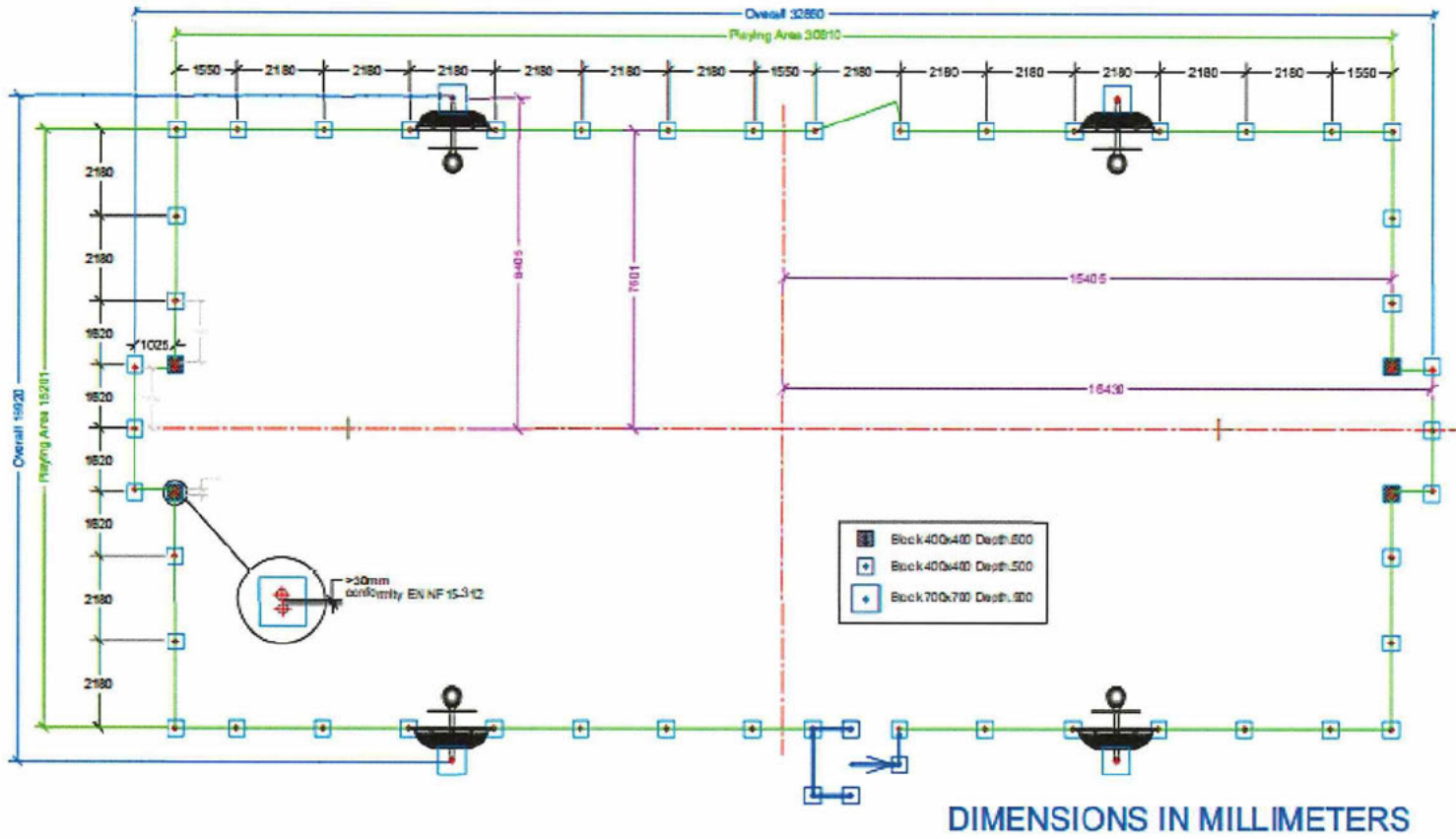
Recommendation that Council award the proposal for "Multi Uses Game Area" to Swingtime Distributors Ltd., in the amount of \$ 417,872.40 (plus applicable taxes); and further, that the Mayor and Corporate Officer be authorized to sign any necessary documentation

Substantiation.

Swingtime Distributors Ltd. met all of the criteria set out in the Request for Proposal (RFP) document. Through an evaluation process their submission was awarded the highest score.



CHILLIWACK , PLAN OF THE CONCRETE BLOCKS





Surface de jeux: 30.78 x 15.12 Mètres
Surface hors tout: 32.93 x 17.28 Mètres

